

ONESIE - 10401
NEWBORN 0 - 9 M

**Sweet and practical onesie or onesie suit.
Simple lines and great fit. Easily made into everyday
wear, under wear or nighttime wear...**

CREATE THE LOOK

Lovely and comfortable onesie or onesie suit. Practical snap closures at the legs make it easy to dress and undress the child. Can easily be modified to make many different looks. Make it stylish in luxury fabric with stripes and funny prints. Mix colours and play with trims...

On the back of the pattern sheet you will find sketches and directions to use in designing your own onesie!

RECOMMENDED FABRIC

The pattern is designed for thin or medium weight knit fabric.

MATERIALS NEEDED

Fabric - 140 cm wide x 65 / 70 / 75 / 80 cm long

Ribbing - min. 50 cm wide x 25 cm for all sizes

Snaps - 7 / 7 / 9 / 9 pcs

Twin needle

Iron on patch for decorating - optional

Always remember to **prewash** your fabric!

PATTERN PIECES

Garment fabric

1. FRONT ✂ X 1

2. BACK ✂ X 1

3. SLEEVE ✂ X 2

Ribbing

Cut according to the directions on the pattern.

SEAM ALLOWANCES

Add NO seam allowance to neckline, inseam, leg seam and sleeve hem.

Add 1 cm seam allowance to all other pieces.

Add NO seam allowance to ribbing.

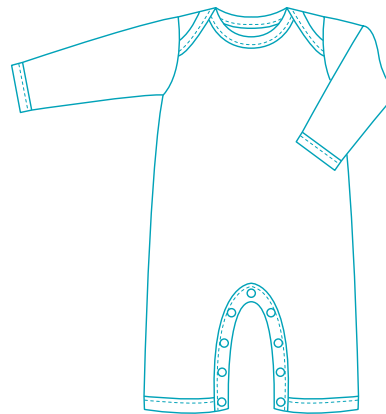
TRACE THE PATTERN

Fold out the pattern sheet. Find the EASY side of the sheet and choose the right size. Place tracing paper on top of the pattern sheet and trace. Then add seam allowances to the traced pattern pieces. Cut out the pattern pieces.

The pattern is ready to be placed on the fabric.

CUTTING THE FABRIC

Fold the fabric along the grain line. Place pattern pieces on the fabric, making sure to match the markings for grain line with the fabric grain line. Pin the pattern pieces to the fabric, to make sure they don't shift around. Cut out the fabric.



© MiniKrea 2011 - All rights reserved
Extensive copying or commercially use of the patterns are prohibited
according to Danish and applicable foreign copyright and related laws

SEWING THE PLAYSUIT

Remember, if you are using a knit fabric, sew using an elastic stitch. Overlock or zigzag the raw edges.

1. Pin and sew the long side of the sleeve ribbing to the sleeve hem, right sides together, stretching the ribbing as you sew. Fold the sleeve ribbing around the edge, towards the wrong side and stitch along the edge with a twin needle from the right side.
Trim the seam allowances of the sleeve ribbing.
Repeat for other sleeve and for the neckline ribbing at front and back.
2. Pin the front and back together at the shoulder seams. Set in the sleeves, right sides together. Sew the sleeve seams and the side seams, right sides together.
Sew the leg ribbing to the leg hems using the same method as with the other ribbing.
3. Sew the inside leg ribbing in place using the same method as above, but let them extend 1.5 cm over the edge of the leg hem. Then fold the extensions to the wrong side and stitch them in place, to make a great looking finish. Set in snaps evenly along the edge.

Decorate the garment with iron-on patches or other trims.

TIP AVOID A GAPING NECKLINE

Place a snap at each side of the neckline, where the front and back ribbing meet. This will keep the neckline in place.

IDEA WIDE RIBBING

The suit also looks adorable if you make wide ribbing edges instead of the narrow edges in the pattern. This will create an entire new look, and will also work as growing-extensions for arms and legs.

Find more inspiration, tips and ideas on minikrea.dk