

TUNIC - 20200
BABY ½ - 3 YEARS

Stylish, simple but very versatile tunic.
Popular pattern with a great fit that has plenty of possibilities for customizing...

CREATE THE LOOK

Lovely tunic to wear at every occasion.
This is a perfect canvas for trying out different colours, trims, prints and design details. Make funny combination sleeves with gathered top sleeve and plain bottom sleeve or vice versa - or elongate the tunic to create a fancy dress.
On the back of the pattern sheet you will find sketches and directions to use in designing your own tunic.

RECOMMENDED FABRIC

The pattern is designed for thin or medium weight woven or knit fabric.

MATERIALS NEEDED

Fabric - 140 cm wide x 85 / 90 / 95 / 100 cm long
Elastic - 5 mm wide
Always remember to **prewash** your fabric!

PATTERN PIECES

- 1. FRONT** ✂ X 1
- 2. BACK** ✂ X 1
- 3. SLEEVE** ✂ X 2

SEAM ALLOWANCES

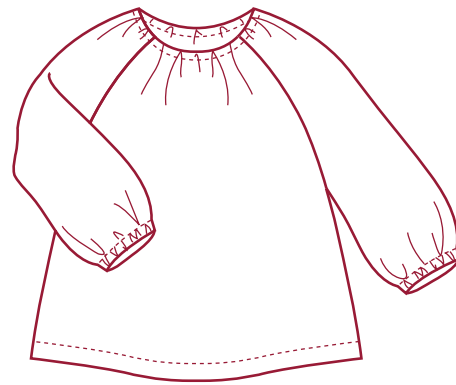
Hem - add 2 cm
Seams - add 1 cm

TRACE THE PATTERN

Fold out the pattern sheet. Find the EASY side of the sheet and choose the right size. Place tracing paper on top of the pattern sheet and trace. Then add seam allowances to the traced pattern pieces. Cut out the pattern pieces.
The pattern is ready to be placed on the fabric.

CUTTING THE FABRIC

Fold the fabric along the grain line. Place pattern pieces on the fabric, making sure to match the markings for grain line with the fabric grain line. Pin the pattern pieces to the fabric, to make sure they don't shift around.
NB! Be extra careful when placing the pattern pieces on fabric with nap or pile such as corduroy or velour.
Also take notice of the fabric design direction when placing the pattern pieces.
Cut out the fabric.



© MiniKrea 2011 - All rights reserved
Extensive copying or commercially use of the patterns are prohibited according to Danish and applicable foreign copyright and related laws

SEWING THE TUNIC

Remember, when you are using a knit fabric, sew using an elastic stitch.

1. Overlock/zigzag all the raw edges.
Sew the sleeves to the front and back, right sides together. Sew the sleeve seams and side seams in one stretch, right sides together.
Press seam allowances open.
2. Fold up the hem and press. Stitch 1.5 cm from the edge.
Fold and press the 1 cm seam allowance at the neckline and sleeve hems to the wrong side. Stitch 0.8 cm from the edge, leaving an opening to pull the elastic through.
3. Cut two pieces of elastic, each 17/18/19/20 cm long for the sleeve hems and one piece 36/38/40/42 cm long for the neckline. Pull the elastic pieces through the casings. Sew the ends of the elastic pieces together, respectively, to form a ring.
Close the casing openings.

TIP SIMPLE NECKLINE AND SLEEVE HEM

You could also finish the sleeve hems and the neckline with bias tape for an interesting design detail.

IDEA PLAY WITH SMOCK SEWING

You can use smock sewing to give the tunic a completely different look. Use it at the sleeves, the waist or the neckline. Just use elastic bobbin thread and sew stitching lines 0.75 cm from each other.
NB! When you are winding the elastic thread onto the bobbin, use two fingers to guide the elastic thread, to keep it tight. This will give you the greatest gathering effect!

Find more inspiration, tips and ideas on minikrea.dk