

## WAISTCOAT - 20250

BABY ½ - 3 YEARS

**Sweet and lovely little waistcoat.**  
**Super simple lines and great fit.**  
**Adorable worn with shirts, dresses and tunics...**

### CREATE THE LOOK

Lovely waistcoat, that will add a little extra to the baby wardrobe. Dress up the boys for a party or give an edge to the girls dresses. There are so many possibilities for creating new looks for both everyday wear and party wear.

Design your own!

On the back of the pattern sheet you will find sketches and directions to use in designing your own waistcoat!

### RECOMMENDED FABRIC

The pattern is designed for thin, medium weight or heavy woven or knit fabric.

### MATERIALS NEEDED

**Fabric** - 140 cm wide x 30 / 35 / 40 / 45 cm long

**Lining fabric** - 140 cm wide x 30 / 35 / 40 / 45 cm long

Always remember to **prewash** your fabric!

### PATTERN PIECES

#### Garment fabric

**1. FRONT**      ✂ X 2

**2. BACK**        ✂ X 1

#### Lining fabric

**3. FRONT LINING**      ✂ X 2

**4. BACK LINING**        ✂ X 1

### SEAM ALLOWANCES

Add 1 cm seam allowance to all pieces

### TRACE THE PATTERN

Fold out the pattern sheet. Find the EASY side of the sheet and choose the right size. Place tracing paper on top of the pattern sheet and trace. Then add seam allowances to the traced pattern pieces. Cut out the pattern pieces.

The pattern is ready to be placed on the fabric.

### CUTTING THE FABRIC

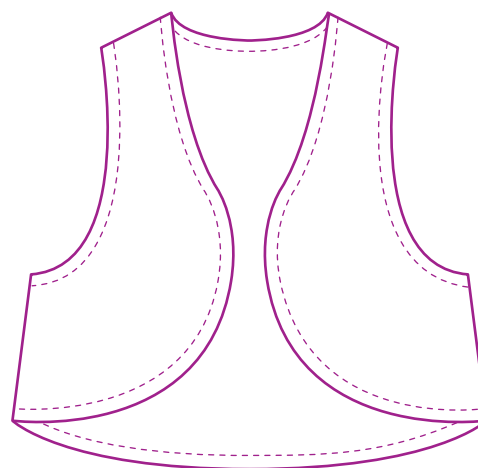
Fold the fabric along the grain line.

Place pattern pieces on the fabric, making sure to match the markings for grain line with the fabric grain line.

Pin the pattern pieces to the fabric, to make sure they don't shift around. Cut out the fabric. NB! Also take notice of the fabric design direction when placing the pattern pieces.

### TIP CURVED EDGES

Instead of clipping notches to curved seam allowances, you can trim the seam allowances to 3 mm. This makes it easy to get nice edges when you turn the garment to the right side. This only works with fabric that doesn't ravel a lot!



© MiniKrea 2011 - All rights reserved

Extensive copying or commercial use of the patterns are prohibited according to Danish and applicable foreign copyright and related laws

### SEWING THE WAISTCOAT

Remember, when you are using a knit fabric, sew using an elastic stitch.

1. Overlock or zigzag the raw edges of all the pieces. Make any decorative stitches and seams before joining the waistcoat pieces. Sew the waistcoat shoulder seams, right sides together. Sew the lining shoulder seams, right sides together. Press the shoulder seams open.
2. Pin the lining to the waistcoat, right sides together. Stitch along the neckline, the arm holes and the front edges until the markings. Clip notches in to the curved seams and turn the waistcoat to the right side. Press the edges. Fold the sides of the lining up and stitch the lining and the waistcoat side seams, right sides together. Press the seam allowances open.
3. Turn the waistcoat to the wrong side. You can't turn it all the way, but you will be able to pin the hems together, right sides together. Stitch the hems together, leaving an opening to turn the waistcoat through. Turn the waistcoat to the right side and press. Edge stitch 2 mm from the edge along all edges. This will also close the opening.

### SIMPLE WAISTCOAT WITH BIAS TAPE EDGES

Sew the waistcoat shoulder seams, right sides together.

Sew the lining shoulder seams, right sides together.

Pin the lining to the waistcoat, wrong sides together.

Sew bias tape to the armholes. Sew bias tape to the hem.

Sew bias tape to the neckline, letting the bias tape extend in both ends and become the ties to close the waistcoat with.

### IDEA TIES

Add a nice detail. Place a pair of cute ribbon pieces in between the layers when you stitch the front edges together. This will give the design an extra detail, which can also be used to close the waistcoat.