

JUMPSUIT - 50440
BASIC 0 - 10 YEARS

Deliciously soft one piece suit with large pockets, hood and zipper. Simple and roomy. The favourite lounge wear for children of all sizes...

CREATE THE LOOK

Great one-piece suit for all children. All-in-one suit which is wonderful for relaxing and playing around the house. Also perfect sportswear for the older children and comfortable day or night time wear for the smallest. Have fun playing with trimmings, fabric print and other details. This will easily become the kiddies favourite garment and can be varied to be suitable for both summer and winter...

RECOMMENDED FABRIC

This pattern is designed for thin or medium weight knit fabric.

MATERIALS NEEDED

Fabric - 140 cm wide x 105/110/115/120/125/130/135/140/145/150/155/160 cm

Lining - 140 cm wide x 39/40/41/42/43/44/45/46/47/48/49/50 cm

Ribbing - minimum 60 cm wide x 30 cm for all sizes

Zipper - approximately 32/34/36/38/40/42/44/46/48/52/56/60 cm long.

Or alternative fabric width

Fabric - 110 cm wide x 120/130/140/150/160/170/180/190/200/215/230/245 cm

Lining - 110 cm wide x 39/40/41/42/43/44/45/46/47/48/49/50 cm

PATTERN PIECES

Garment Fabric

- 1. FRONT  X 2
- 2. BACK  X 2
- 3. SLEEVE  X 2
- 4. HOOD  X 2
- 5. POCKET  X 2

Lining

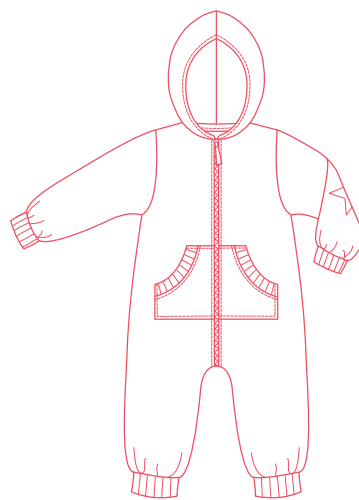
- 4. HOOD  X 2
- 9. NECKLINE EDGING  X 1
- RIBBING**
- 6. SLEEVE RIBBING  X 2
- 7. LEG RIBBING  X 2
- 8. POCKET RIBBING  X 2

SEAM ALLOWANCES

Add 1 cm seam allowance to all pieces except piece 9. NB! Pattern piece 9 has 1 cm seam allowances included!

TRACING AND CUTTING

Choose the right size. Place tracing paper on top of the pattern sheet and trace. Then add seam allowances to the traced pattern pieces. Cut out the pattern pieces. Fold the fabric along the grain line. Place pattern pieces on the fabric, making sure to match the markings for grain line with the fabric grain line. Pin the pattern pieces to the fabric, to make sure they don't shift around. Cut out the fabric.



© MiniKrea 2013 - Copying or using commercially is prohibited without a minikrea licensing agreement

SEWING THE JUMPSUIT

Sew using elastic stitches and overlock or zigzag all seam allowances as you sew.

1. Fold and press the pocket ribbing pieces in the fold line, wrong sides together. Pin and sew them to the pocket edges - stretching the ribbing as you sew. Press the seam allowances of the pockets under and edge stitch 2 mm from the edge to keep them in place. Fold and press the pocket seam allowance to the wrong side. Pin and stitch the pockets to the front pieces, so that the front edges of the pockets align with the front edges of the suit. Pin or baste the zipper in place at the front edges, right sides together - if it is too long, shorten it from the bottom. Stitch the zipper in place. Press the seam allowances towards the wrong side and edge stitch 0.5 cm from the edge.
2. Sew the centre back seam, right sides together. Sew the shoulder seams, right sides together. Sew the sleeves to the armholes, right sides together. Sew the sleeve seams and side seams, right sides together. Sew the inseams, right sides together - be careful when you sew on top of the zipper. Sew each sleeve ribbing and leg ribbing seam, right sides together. Fold each ribbing piece in the fold line, wrong sides together. Pin and stitch the sleeve ribbing and the leg ribbing pieces to the sleeve hems and the leg hems, respectively, distributing the stretch evenly, right sides together and stretching the ribbing as you sew.
3. Sew the hood seam, right sides together and the hood lining seam, right sides together. Pin and sew the hood lining to the hood along the front edge of the hood, right sides together. Turn the hood to the right side, press the edge and edge stitch along the front edge 0.5 cm from the edge. Pin and sew the hood and the neckline edging in place along the neckline, right sides together - letting the neckline edge continue 1 cm past the neckline. Press the neckline edge towards the seam allowance and understitch it to the seam allowance. Fold the neckline edge and its ends around the seam allowance, pin and stitch it in place by edge stitching along the neckline.